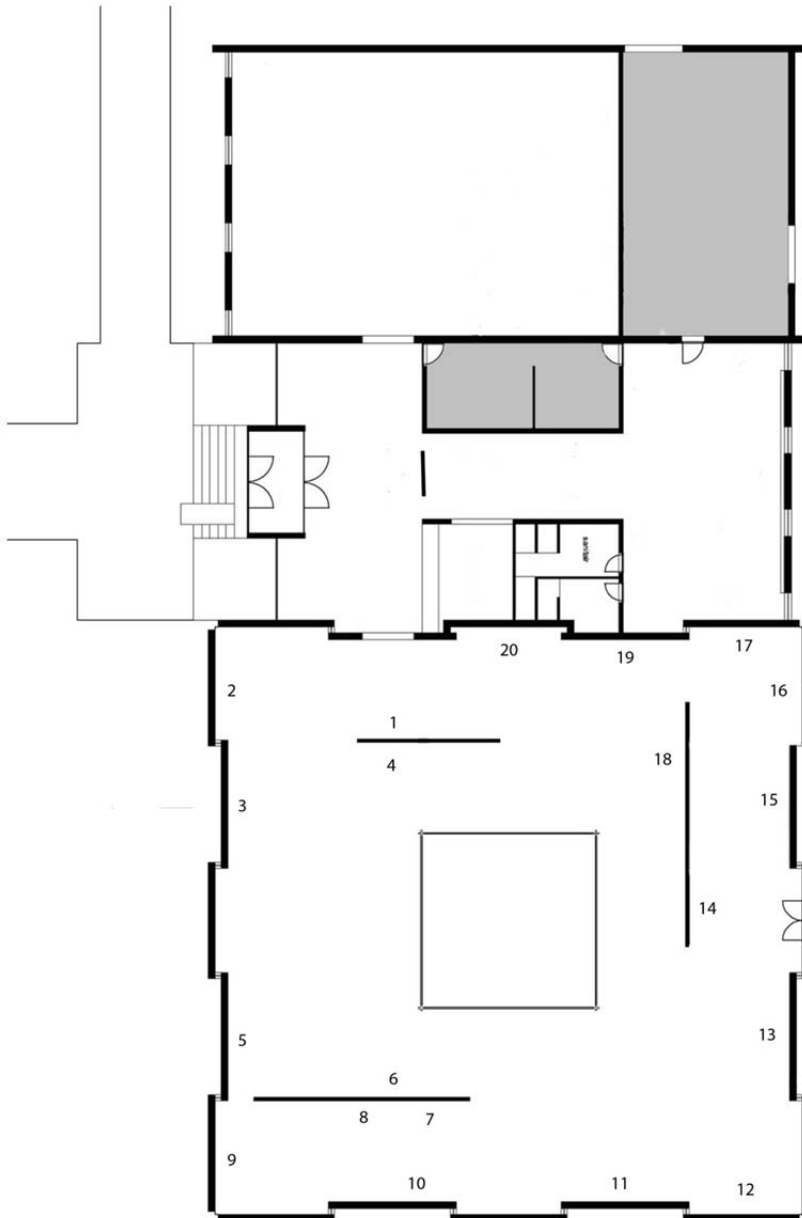


**CHRISTOPHER WILLIAMS**  
27.03 – 05.06.2011

**Lijst tentoongestelde kunstwerken**

1. *Bläsing G 200, Bläsing GmbH, Essen*  
Model: Christoph Boland  
November 15th, 2010  
2010, Archival Pigment Print, 50,8 x 61 cm
2. *Untitled (Study in Red)*  
Dirk Schaper Studio, Berlin,  
April 30th, 2009  
2011, Archival Pigment Print, 35,5 x 27,9 cm
3. *Reinigung Ursula Schweyen,*  
Lindenstr. 34, Köln  
February 17th, 2010  
2010, Gelatin Silver Print, 50,5 x 60,3 cm
4. *Bergische Bauernscheune, Junkersholz,*  
Leichlingen,  
September 29th, 2009  
2010, Archival Pigment Print, 50,8 x 61 cm
5. *Weimar Lux CDS, VEB Feingerätewerk*  
Weimar, Price 86,50 Mark GDR  
Filmempfindlichkeitsbereich 9 bis 45 DIN und  
6 bis 250000 ASA, Blendenskala 0,5 bis 4,5,  
Zeitskala 1/4000 Sekunde bis 8 Stunden  
Ca. 1980  
Models: Ellena Borho and Christoph Boland  
November 12th, 2010  
2010, Archival Pigment Print, 61 x 50,8 cm
6. *Naturpark Schwarzwald Mitte/Nord*  
Neben Bergach  
June 8th, 2010  
2010, Gelatin Silver Print, 50,2 x 60,3 cm
7. *Untitled (Study in Yellow/Berlin)*  
Dirk Schaper Studio, Berlin, June 21st,  
2007 (No.1) (aus der Serie For Example: Dix-Huit Leçons Sur La Société Industrielle)  
2008, Archival Pigment Print, 48,3 x 37,8 cm
8. *Camera: Praktika, Praktisix (1959-64)*  
Kamera- und Kinowerke Dresden, 120 film  
6x6 cm, height: 11 cm, width: 16,5 cm, depth:  
12 cm, weight: 1280g  
Lens: Carl-Zeiss-Jena, Tessar 1:2,8 80 mm,  
normal lens: Biometar 80/2,8 lens mount:  
Praktisix Bayonet, typical serial no: 20830  
November 9th, 2010  
2010, Archival Pigment Print, 50,8 x 61 cm
9. *Packset (small 25 x 17 x 10 cm)*  
Deutsche Post, Euro Express,  
(Leben Sie den ausgefüllten Versandschein hier auf.  
Lassen Sie sich beraten und wählen Sie die beste  
Versandart für Ihr Packset).  
Douglas M. Parker Studio, Glendale, California  
April 14, 2003  
2003, Dye transfer print, 40,6 x 50 cm
10. *Staatliche Kunsthalle Baden-Baden,*  
Lichtentaler Allee 8a, Baden-Baden,  
Germany  
June 7th, 2010  
2010, Archival Pigment Print, 61 x 50,8 cm
11. *Fachhochschule Aachen, Fachbereich*  
Gestaltung, Studiengang: Visuelle  
Kommunikation, Fotolabor für Studenten,  
Boxgraben 100, Aachen,  
November 8th, 2010  
2010, Archival Pigment Print, 61 x 50,8 cm
12. *Mustafa Kinte (Gambia)*  
Camera: Makina 67 506347  
Plaubel Feinmechanik und Optik GmbH  
Borsigallee 37  
60388 Frankfurt am Main, Germany  
Shirt: Van Laak Shirt Kent 64  
41061 Mönchengladbach, Germany  
Dirk Schaper Studio, Berlin, July 20, 2007 (aus der Serie For Example: Dix-Huit Leçons Sur La Société Industrielle)  
2008, Gelatin Silver Print, 50,8 x 40,6 cm
13. *Window (with Pedestal)*  
Set and pedestal built by Paul Persighetti  
Object Design Persighetti, Leysiefen Str. 39,  
Leichlingen, Germany  
Studio Thomas Borho, Oberkasseler Str. 39,  
Düsseldorf, Germany  
November 16th, 2010  
2010, Gelatin Silver Print, 50,5 x 60,3 cm
14. *Kodak Three Point Reflection Guide,*  
© 1968 Eastman Kodak Company, 1968.  
(Corn)  
Douglas M. Parker Studio, Glendale, California.  
April 17, 2003 (aus der Serie For Example: Dix Huit Leçons sur la Société Industrielle)  
2003, Dye transfer print, 40,6 x 50,8 cm

Courtesy of Galerie Gisela Capitain, Cologne and David Zwirner, New-York



**CHRISTOPHER WILLIAMS**  
27.03 – 05.06.2011

**Lijst tentoongestelde kunstwerken**

15. *Model # 105M – R59C*  
Kestone Shower Door  
57,4 X 59 inches Chrome / Raindrop  
SKU # 109149 # 96235.  
970 – 084 – 000 (Meiko)  
Vancouver, B.C. April 6, 2005  
2005, Gelatin Silver Print, 40,6 x 50,8 cm
16. *One of 406 Ceiling Panels (23 ¾ x 23 ¾ inches each)*  
Covered on the back with striped paper  
(green and white)  
Each Stripe is 8,7 cm  
From *“Frost and Defrost: A Work In Situ  
By Daniel Buren”*  
Otis Art Institute Gallery, 2401 Wilshire Blvd.,  
Los Angeles, California  
January 28 – March 4, 1979  
Hal Glicksman, Gallery Director;  
Christopher D’Arcangelo, Assistant to  
Daniel Buren  
Douglas M. Parker Studio, Los Angeles,  
California, May 4, 2006  
2006, Chormogenic Print, 60 x 59,7 cm
17. *Garten im Voigtmichelshof, Alpirsbach*  
June 7th, 2010  
2010, Archival Pigment Print, 50,8 x 61 cm
18. *Femme, monument, 1970. Kunstgießerei  
Bonvinici, Verona. Bronze, 250 x 100 x 50 cm*  
Museum Frieder Burda, Baden-Baden.  
Bronze with black patina, signed and numbered  
with engraving *“Miro EA 2”*  
June 9th, 2010  
2010, Gelatin Silver Print, 60,3 x 50,5 cm
19. *Window (with Window Cutaways)*  
Set built by Paul Persighetti, Object Design  
Persighetti, Leysiefen 9a, Leichlingen,  
Germany  
Cutaways produced by Biffar GmbH & Co. KG  
In den Seewiesen, 67480 Edenkoben, Germany  
Studio Thomas Borho, Oberkasseler Str. 39,  
Dusseldorf, Germany,  
November 16th, 2010  
2010, Gelatin Silver Print, 50,2 x 60,3 cm
20. *Clockwise from Manufacturer Name (Outer Ring)*  
Michelin  
X M+S 89  
  
*Clockwise from Tire Size (Inner Ring)*  
135 R 15  
72 Q E2 0281541  
M + S  
Tubeless  
Radial  
X  
TF 852 20-2044  
Tread: 1 Polyester Ply  
+ 2 Steel Plies  
Sidewall: 1 Polyester Ply  
Canada and U.S. Codes Only  
Max Load 355 Kg (780 Lbs)  
Max Press. 350 kPa (51 PSI)  
V-1  
  
Douglas M. Parker Studio, Glendale,  
California, January 03, 2008 - January  
04, 2008 (aus der Serie *For Example: Dix-Huit Leçons Sur La Société  
Industrielle*)  
2008, Gelatin Silver Print, 60,8 x 50,5 cm  
  
Haubrok Collection, Berlin

Courtesy of Galerie Gisela Capitain, Cologne and David Zwirner, New-York